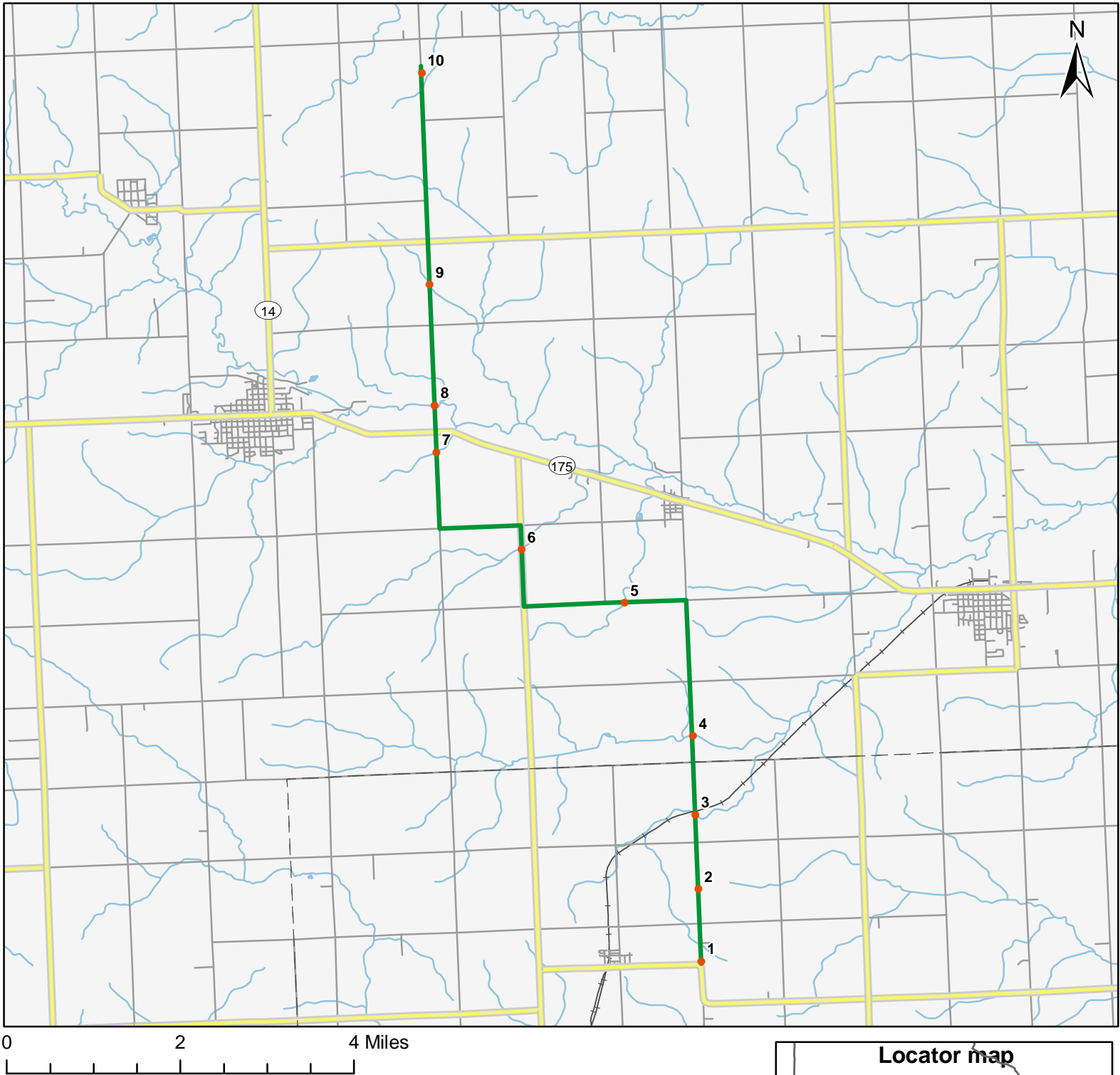


North American Amphibian Monitoring Program



Route: 360211 Lincoln, IA



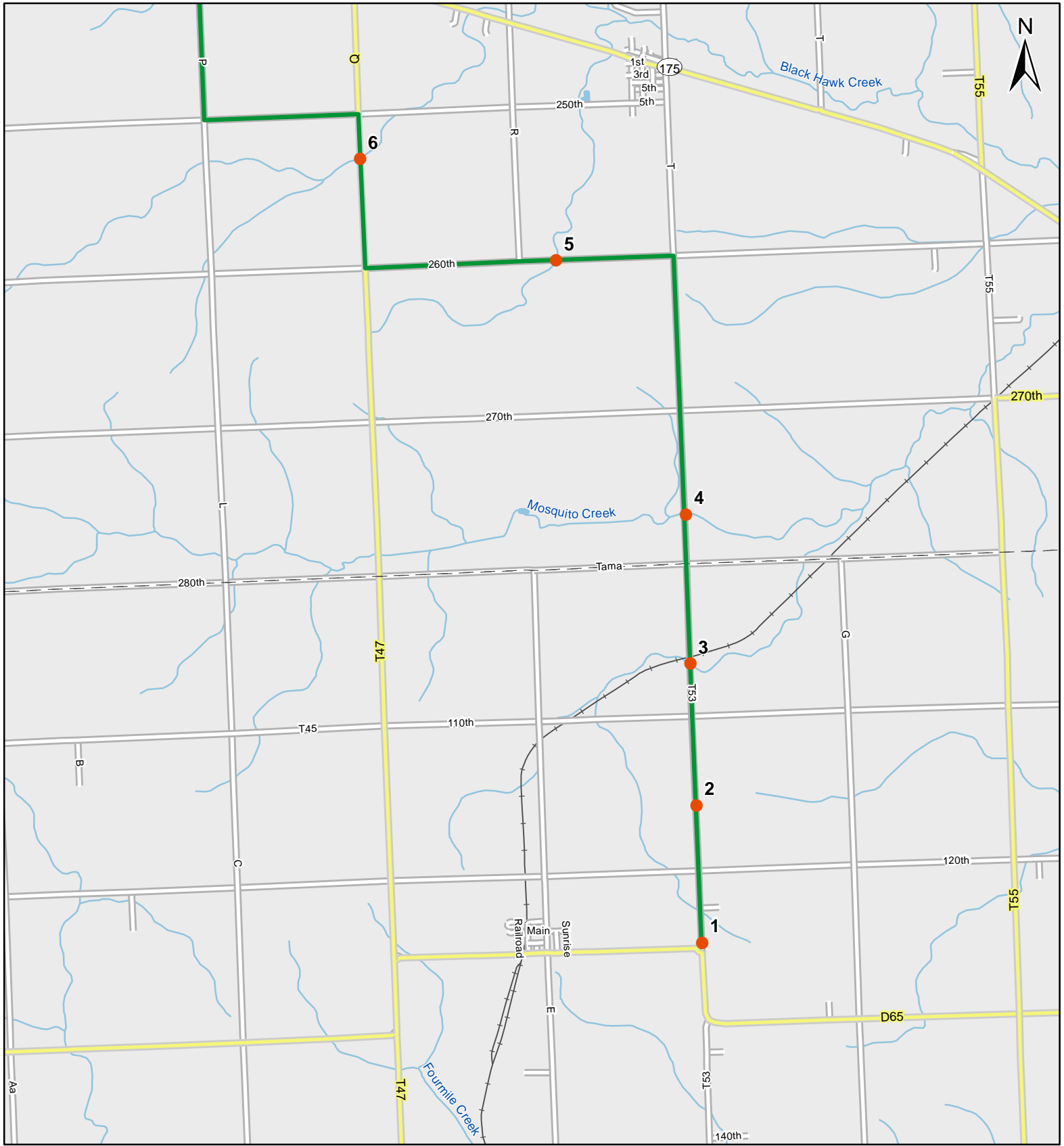
Legend

- Stop Locations
- Route Path



For more information, please visit the NAAMP website:
<http://www.pwrc.usgs.gov/naamp/>

Route: 360211 Lincoln, IA

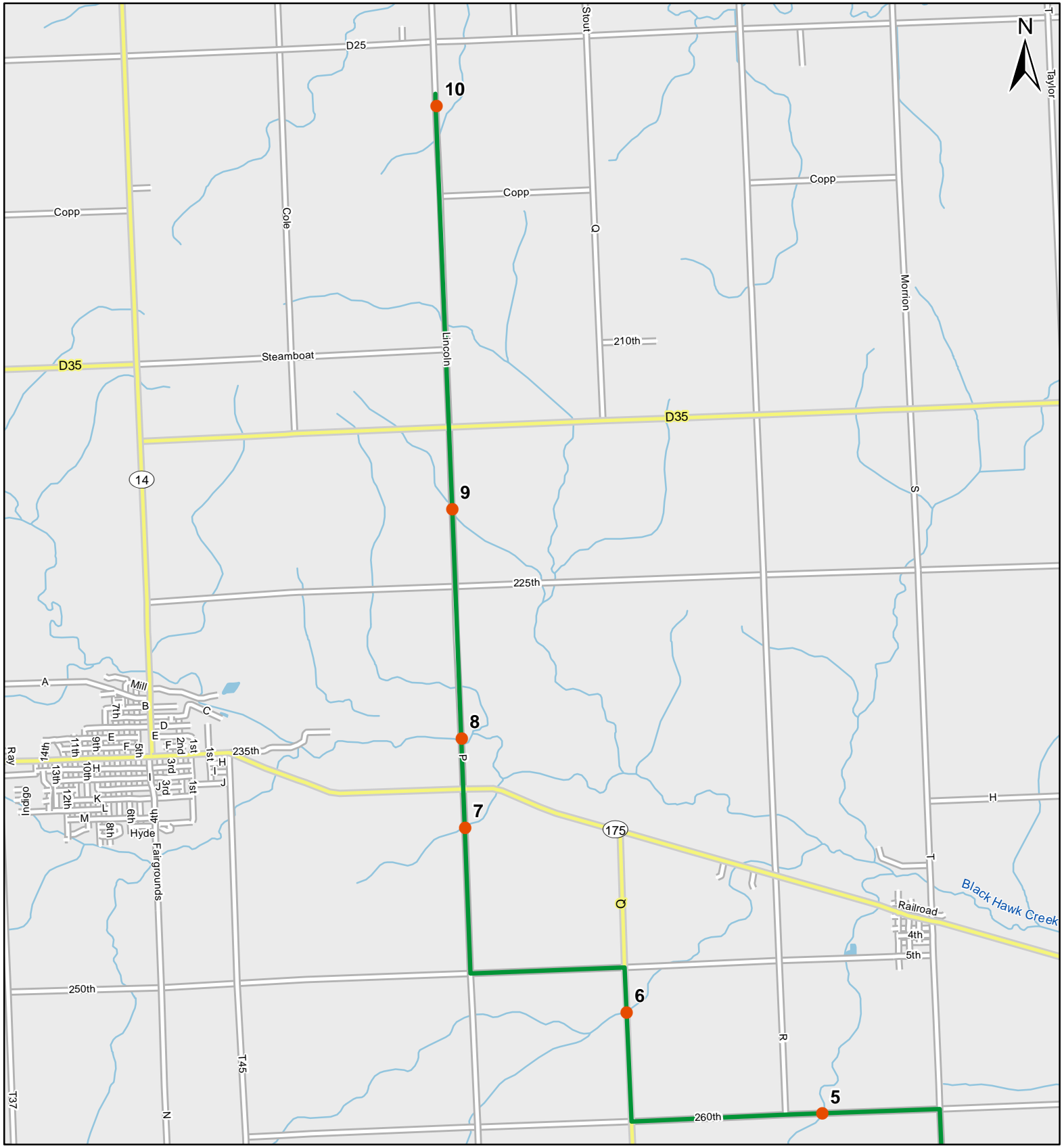


1:50,000

Legend

- Stop Locations
- Route Path

Route: 360211 Lincoln, IA



0 1 Miles

1:50,000

Legend

- Stop Locations
- Route Path



Frog and Toad Call Survey Route Description

Route ID **360211**

Established:

Site Number	Name	County	Latitude	Longitude	Directions
1	0	Tama	42.2613983	-92.6705017	While going east on D65 merge left (north) onto gravel when the road curves south. Wet drainage ditch with culvert on wets side of the road.
2	0.8	Tama	42.2742996	-92.6705017	Small creek and drainage culvert on west side of the road
3	1.8	Tama	42.2876015	-92.6706009	Small stream. Park after narrow bridge
4	2.7	Grundy	42.3016014	-92.6704025	Small stream. Park on or after bridge.
5	5.1	Grundy	42.3258018	-92.6856003	Small stream running perpendicular to the road.
6	7	Grundy	42.3359985	-92.7098007	Small stream running perpendicular to road in a gully. Pull entirely off road onto shoulder.
7	9.2	Grundy	42.3538017	-92.7293015	Small stream running through fields
8	9.7	Grundy	42.3622017	-92.7293015	Medium river/large stream. Park after bridge.
9	11.2	Grundy	42.3837013	-92.7294006	Small culvert and very wet ditch on west side of road.
10	13.8	Grundy	42.4215012	-92.7294998	Wet ditches on either side of road.